

# VoIP Discovery Utility Program Instructions



TITLE:  
VoIP Discovery Utility Program Instructions

DOCUMENT NUMBER  
**930403A**

SHEET 1

## Revision History

Revision Level	Date	Description
A	01/28/2011	This is the first release as a 93 part number document. The original document number was 910028A.



# Table of Contents

Section	Title	Page
1.0	Overview	4
2.0	Procedure	5



## 1.0 Overview

The Discovery Utility scans the network and reports back any found VoIP devices that are attached to the physical network. Discovery requests cannot be passed across routers, so only devices on the "inside" of an installation's router(s) can be discovered. Currently, the following CyberData products support the VoIP Discovery Utility:

- 010844, Speaker, VoIP, Indoor Paging, SIP, Ceiling/Wall Mounted
- 010846, Gateway, PoE-VoIP Paging, SIP Version
- 010859, Amplifier, VoIP Loudspeaker, AC Powered
- 010860, Amplifier, VoIP Loudspeaker, Wireless
- 010861, Amplifier, VoIP Loudspeaker, PoE
- 010881, Controller, VoIP Zone, 4-Port Audio Out

**Note** The utility will report the words **Unknown VoIP Device** for any product that responds to, but is not recognized by the utility. If you experience this, you should update your Discovery Utility.



TITLE:

VoIP Discovery Utility Program Instructions

DOCUMENT NUMBER

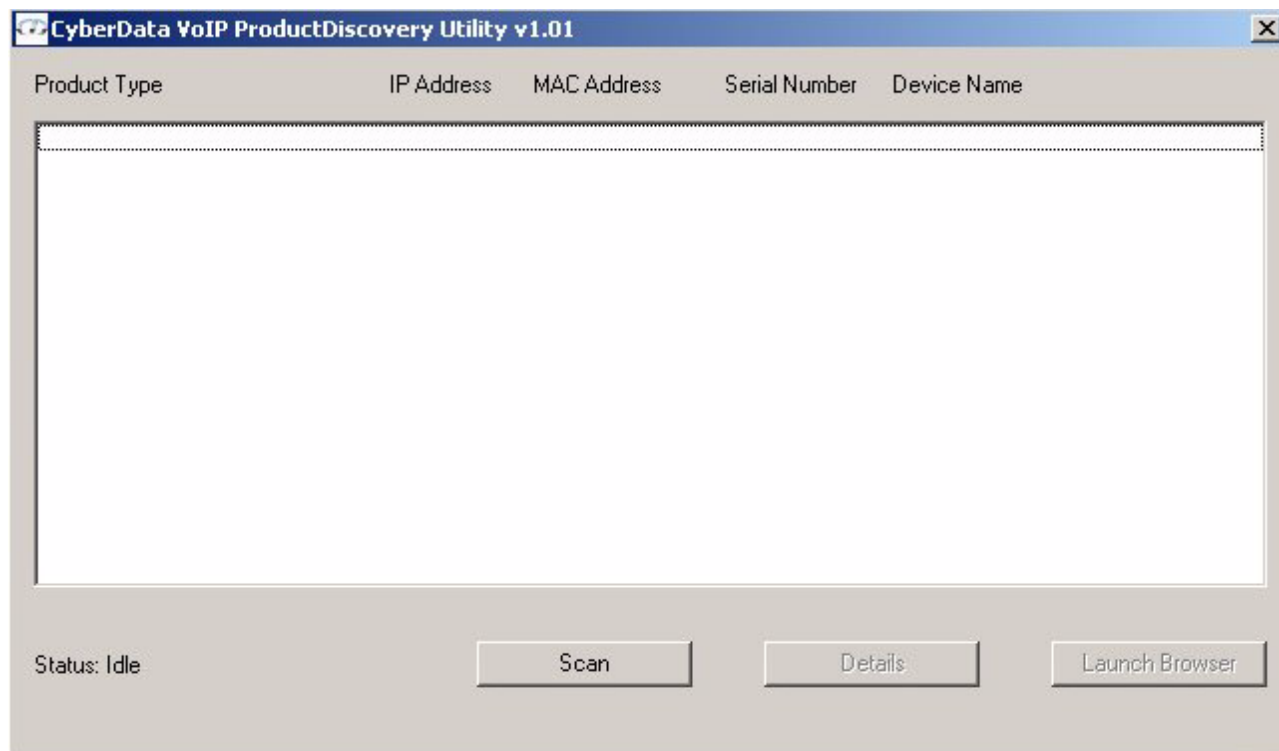
**930403A**

SHEET 4

## 2.0 Procedure

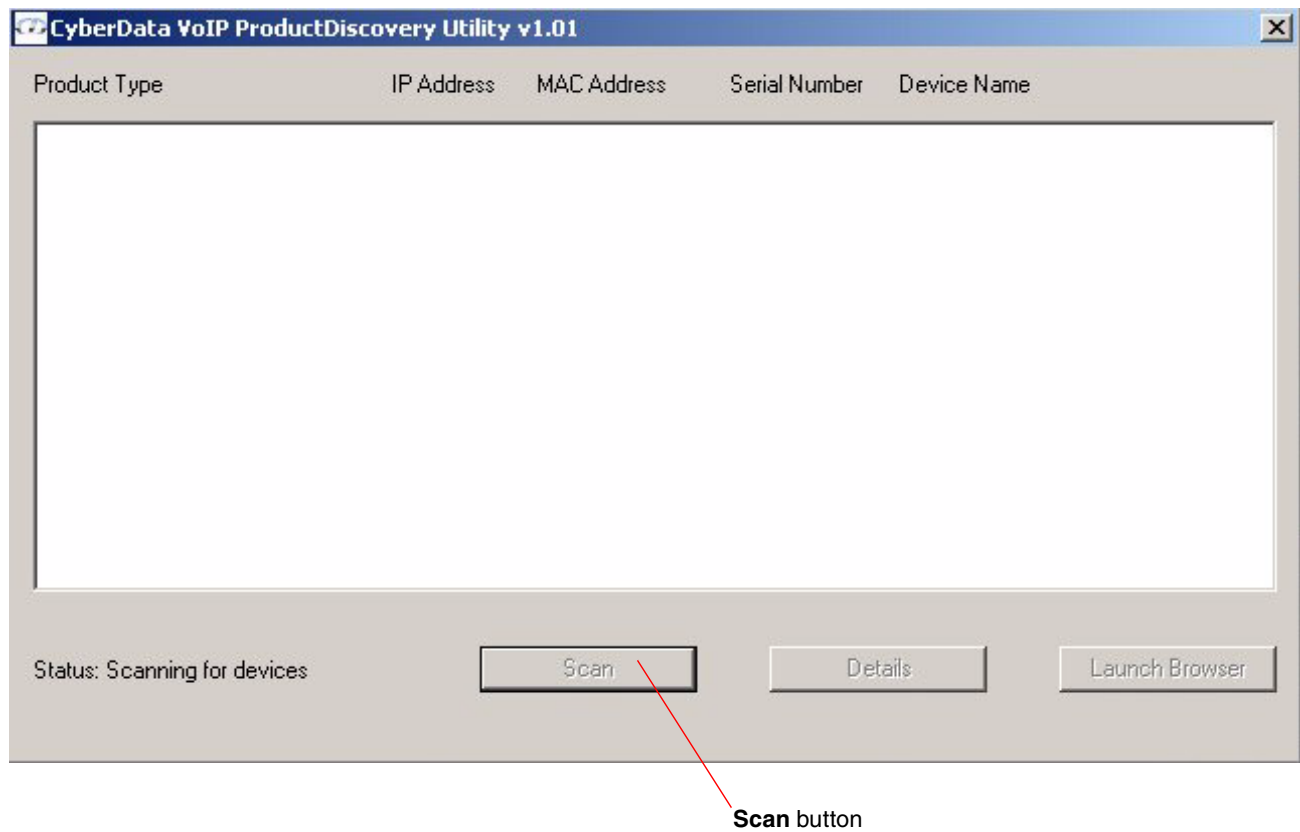
2.1 Launch the utility and you will see the following:

**Figure 1. Utility Window During Idle Status**



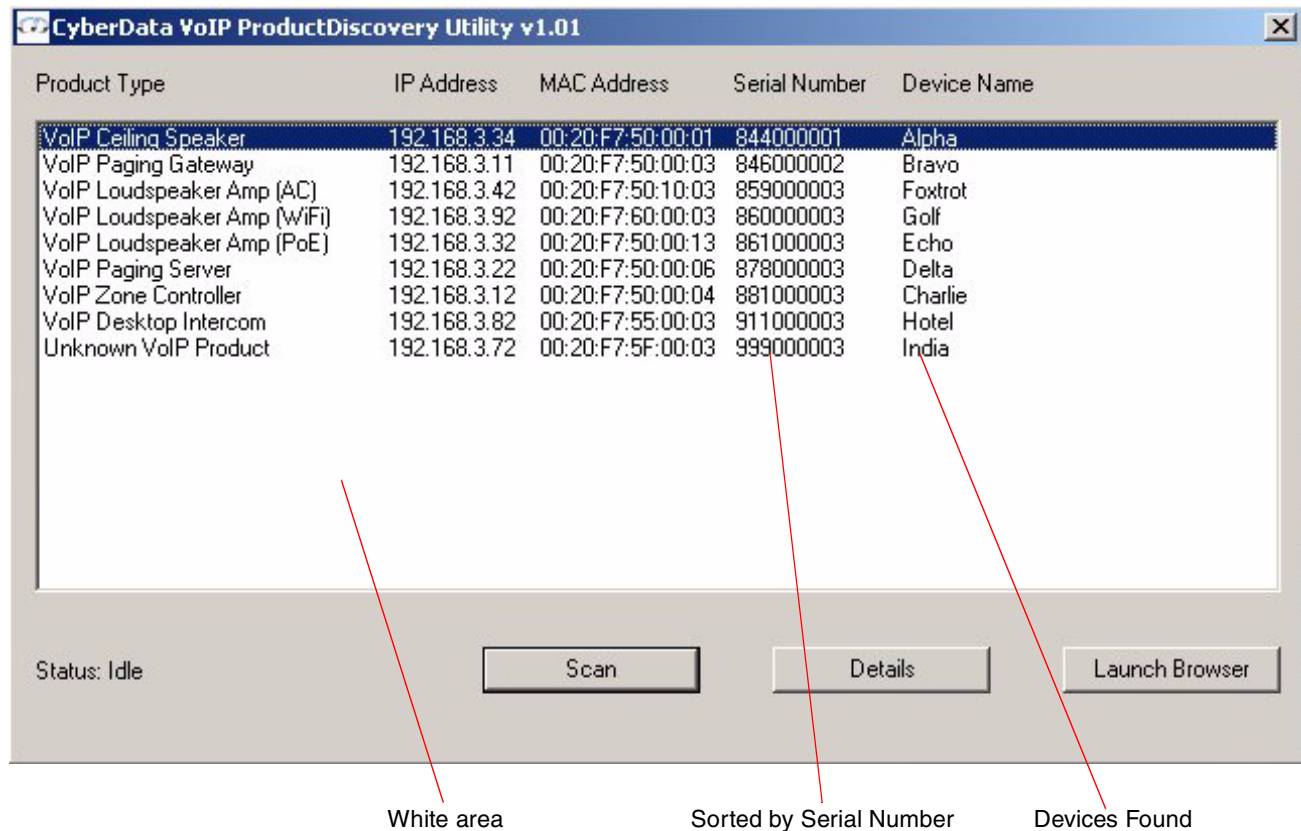
2.2 Click on the scan button and wait.

**Figure 2. Utility Window During Scanning Status**



2.3 When devices are found, they are displayed and sorted by serial number.

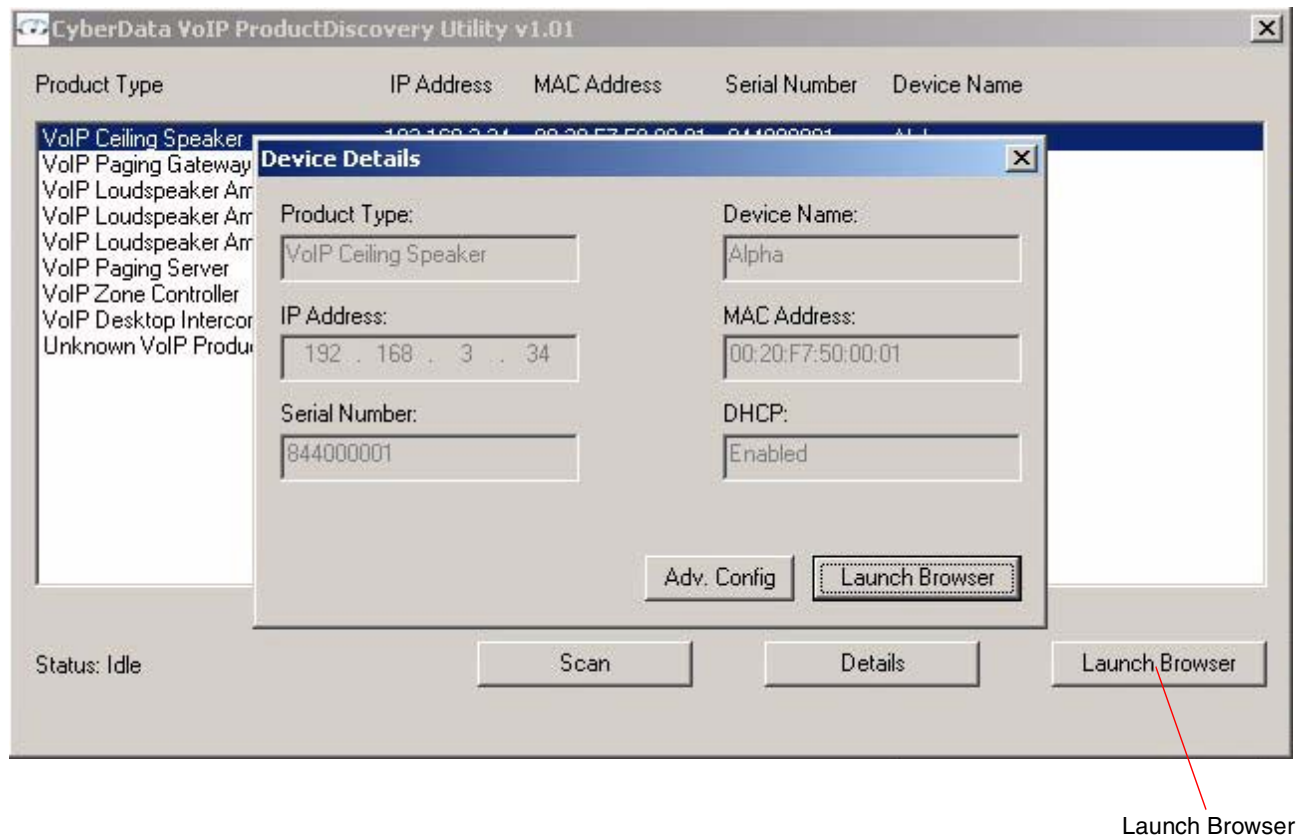
**Figure 3. Utility Window After Devices are Found**



2.4 You may sort the list by the name of the device. To do so, right-click anywhere in the white area and select **Sort by name** in the submenu.

2.5 Double-click a device in the list to view its details. The **Device Details** window will appear.

**Figure 4. Device Details Window**




2.6 To view the device's web page, click on the **Launch Browser** button to launch a web browser.

**Note** The **Launch Browser** option will only work if the device's IP settings are configured correctly and the device resides on the same subnet as your computer.



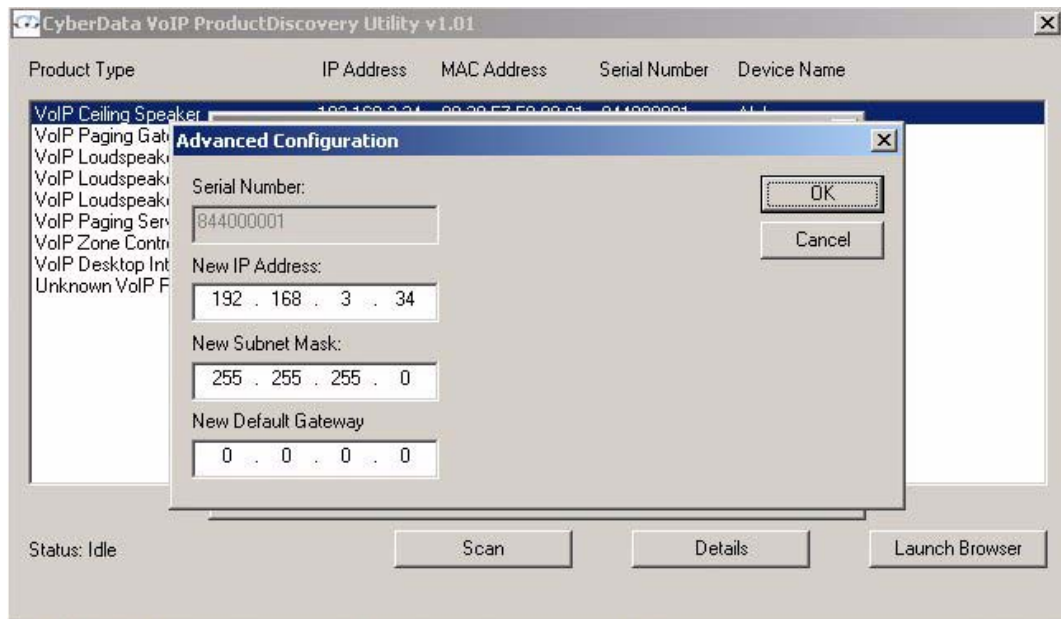
- 2.7 In the **Device Details** window, you can change the device's basic IP configuration by clicking on the **Adv. Config** button (Figure 5). The **Advanced Configuration** window will appear (Figure 6). This is useful in situations where the device cannot be reached via a web browser because it is mis-configured.

**Figure 5. Advanced Configuration Button**

A screenshot of the 'Device Details' window. It contains fields for Product Type (VoIP Ceiling Speaker), Device Name (Alpha), IP Address (192.168.3.34), MAC Address (00:20:F7:50:00:01), Serial Number (844000001), and DHCP (Enabled). At the bottom right, there are two buttons: 'Adv. Config' and 'Launch Browser'. A red arrow points from the 'Adv. Config' button to the caption below.

Advanced Configuration Button

**Figure 6. Advanced Configuration Window**

A screenshot of the 'CyberData VoIP ProductDiscovery Utility v1.01' window. It shows a list of devices on the left, including 'VoIP Ceiling Speaker'. An 'Advanced Configuration' dialog box is open over the list, containing fields for Serial Number (844000001), New IP Address (192.168.3.34), New Subnet Mask (255.255.255.0), and New Default Gateway (0.0.0.0). The dialog has 'OK' and 'Cancel' buttons. At the bottom of the main window, there are buttons for 'Scan', 'Details', and 'Launch Browser', along with a 'Status: Idle' indicator.